

YOUR BIO SEPARATION PARTNER



Sepax Technologies

立行科技總代理

Contact:

TEL : 02-2776-6931

MAIL : sales@analab.com.tw

LINE : @analab

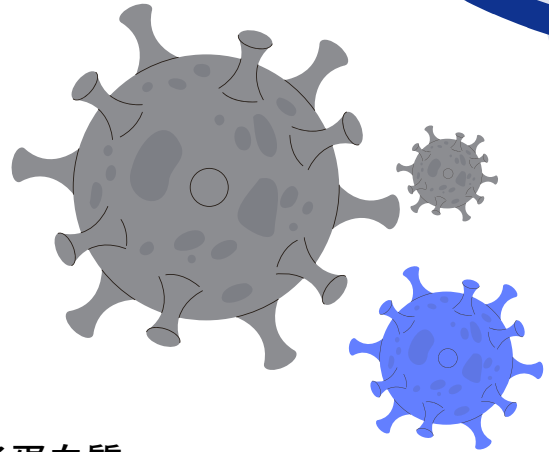


SRT SEC-750

腺相關病毒 (AAV) 專用管柱

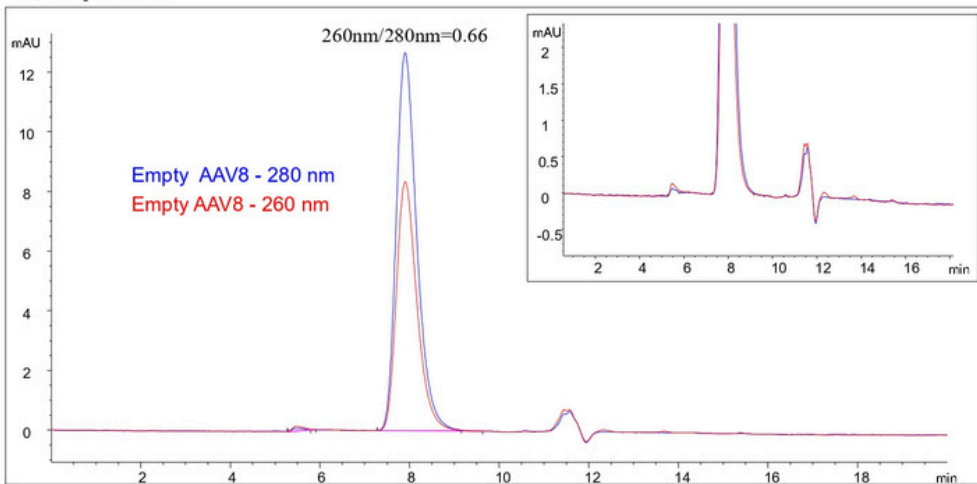
產品特點:

1. 專為腺病毒研究所研發的管柱。
2. 高解析度以及高樣品負載能力。
3. 純化時提供高回收力。
4. 可提供製備規格。
5. 獨特750Å孔洞設計,可同時分析大分子以及小分子蛋白質。



應用資料:

AAV8 Empty Capsid Ratio 260/280



Column: SRT SEC-750 Å, 5 µm, 4.6 x 300 mm;

Mobile Phase: 1.8X DPBS with 10% Ethanol;

Flow Rate: 0.35 mL/min

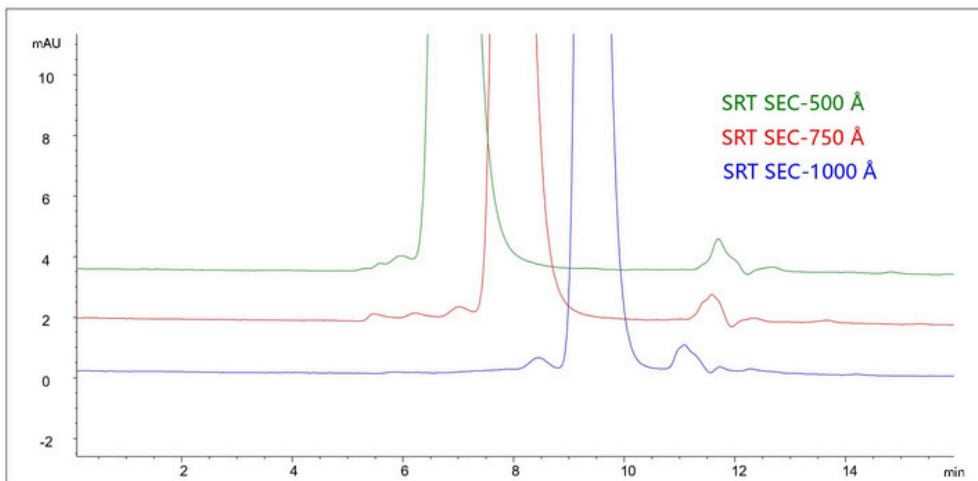
Column Temperature: 25 °C

Injection Volume: 10 µL;

Detector: UV 260nm, 280nm

Sample: AAV8

AAV8 Pore Size Comparison



Column: SRT SEC-750 Å, 5 µm, 4.6 x 300 mm;

Mobile Phase: 1.8X DPBS with 10% Ethanol;

Flow Rate: 0.35mL/min;

Column Temperature: 25 °C

Injection Volume: 10 µL;

Detector: UV 260nm, 280nm;

Sample: AAV8

SRT SEC-1000 / 2000

適用於超大分子分析

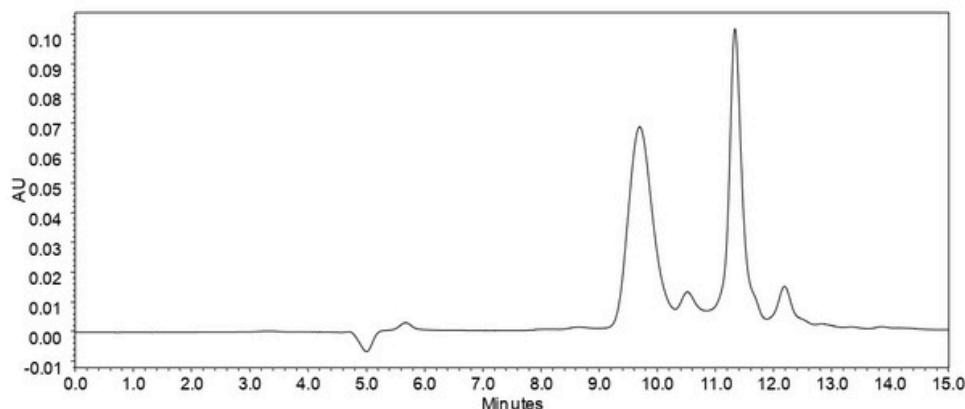
產品特點：

1. 高效率, 高的載荷容量和分辨率
2. 高的批次間重現性
3. 高相穩定性
4. 適合用來分析疫苗等大分子量樣品
5. 獨特大孔洞設計, 1000A可分析極限可至7,500,000 Mw 2000A可分析極限可至10,000,000 Mw。



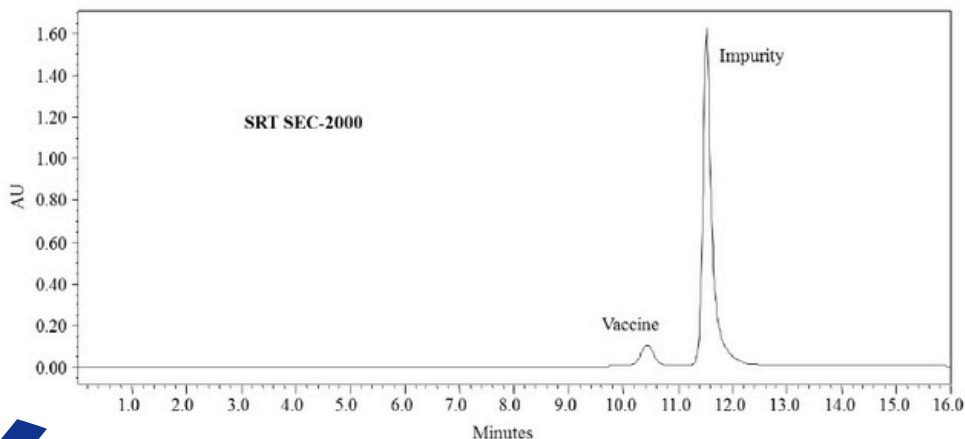
應用資料：

Separation of Thyroglobulin on SRT®-1000



Column: SRT®SEC-1000 (5 μm , 1000 \AA , 4.6 x 300 mm)
Mobile Phase: 150 mM phosphate buffer, pH 7
Flow Rate: 0.35 mL/min
Temperature: Ambient
Sample: rhIL-10 sR
Concentration: 1 mg/mL
Injection Volume: 3 μL

Analysis of Vaccine Sample on SRT®SEC-2000



Column: SRT® SEC-2000
Mobile phase: 150 mM phosphate buffer, pH 7.0
Flow rate: 1.0 mL/min
Temperature: 25°C
Sample injection: 20ul
Sample: Vaccine
MW~80,000 KD

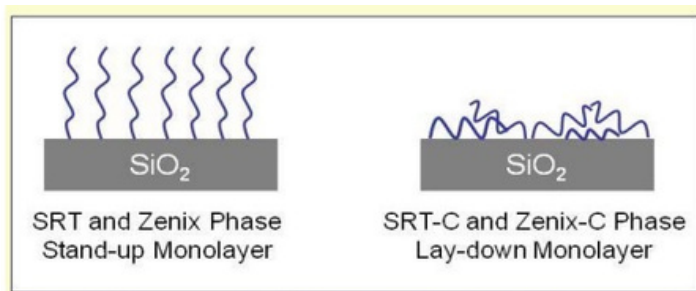
SRT Zenix-C

適用於ADC (Antibody-Drug Conjugates) 分析

產品特點:

- 1.3 μ m 高解析度以及高樣品負載能力
- 2.純化時提供高回收力
- 3.惰性表面減少與樣品發生反應
- 4.可廣泛用於生物性樣品的分析
- 5.特別適合用來分析疏水性的生物樣品

Ex: **hydrophobic proteins** like insulin, membrane protein, monoclonal antibodies derivatized with polymer branches, e.g. polypeptide, PEG.

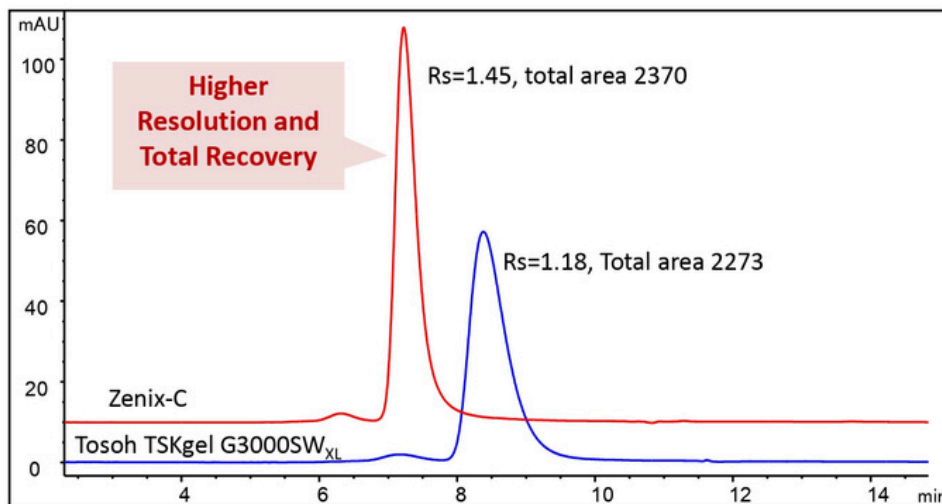


獨家特殊的表面修飾,特別適合用來分析疏水性的樣品

應用資料:

Herceptin-Lysine Drug Conjugate Analysis

Zenix-C SEC-300 vs. Tosoh TSKgel G3000SWXL



Column: Zenix SEC-300 (3 μ m, 300 \AA , 7.8 x 300 mm)

Mobile phase: 150 mM phosphate buffer, pH 7.0;

Flow rate: 1 mL/min;

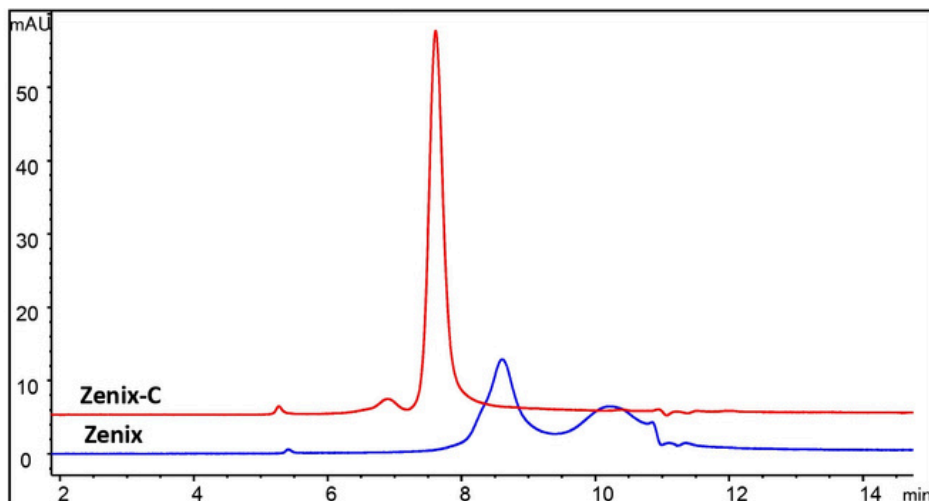
Detector: UV 280 nm;

Column temperature: 25 $^{\circ}$ C

Injection volume: 10 μ L;

Samples: Herceptin-lysine drug conjugate 2.05 mg/m

Antibody drug conjugate Analysis on Zenix-C 300



Column: Zenix SEC-300 (3 μ m, 300 \AA , 7.8 x 300 mm)

Mobile phase: 150 mM phosphate buffer, pH 7.0;

Flow rate: 1 mL/min;

Detector: UV 280 nm;

Column temperature: 25 $^{\circ}$ C

Injection volume: 20 μ L;

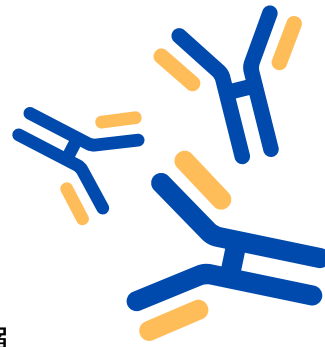
Samples: 1.68 mg/mL ADC

BioMix SEC-300

適用於雙特異性抗體(bispecific antibody)分析

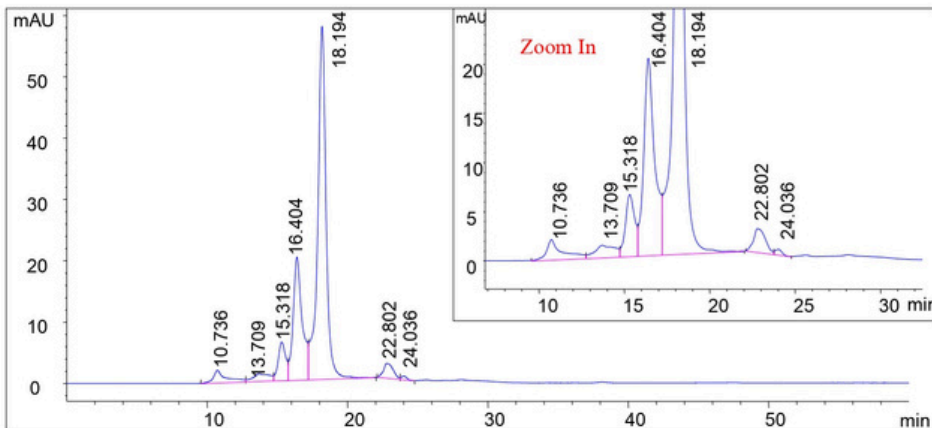
產品特點:

1. 高效柱層填充材料。
2. 利用專利表面技術和 $3\ \mu\text{m}$ 顆粒製成。
3. 在高純度的二氧化矽上,結合了親水性和中性納米層。
4. 具有高穩定性和柱與柱之間的重現性。
5. 最高分辨率和最大回收率,適用於各種分析物,如雙特異性單株抗體和親脂性樣品。



應用資料:

BsmAb Analysis on BioMix MM SEC-300



Column: BioMix SEC-300, $3\ \mu\text{m}$, $300\ \text{\AA}$, $7.8 \times 300\ \text{mm}$;

Mobile Phase:

PBS + 300mM NaCl (pH7.4);

Flow Rate: 0.5 mL/min;

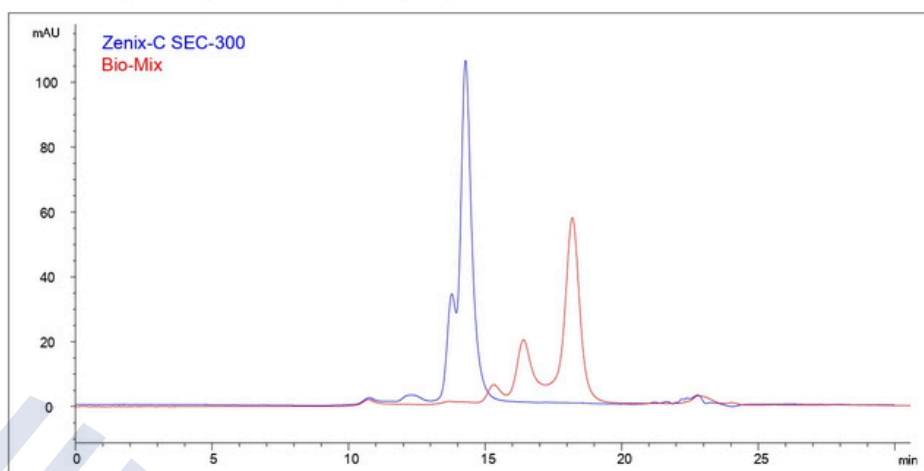
Detector: UV 280 nm;

Column Temperature: Ambient;

Injection Volume: 100 μL ;

Sample: BsmAb-1 (0.23 mg/mL)

BioMix MM SEC-300 vs. Zenix-C SEC-300



Columns: BioMix SEC-300, $3\ \mu\text{m}$, $300\ \text{\AA}$, $7.8 \times 300\ \text{mm}$

Mobile Phase: PBS + 300mM NaCl (pH7.4);

Flow Rate: 0.5 mL/min;

Detector: UV 280 nm;

Column Temperature: Ambient;

Injection Volume: 100 μL ;

Sample: BsmAb-1 (0.23 mg/mL)

Generik® 填充用玻璃空管

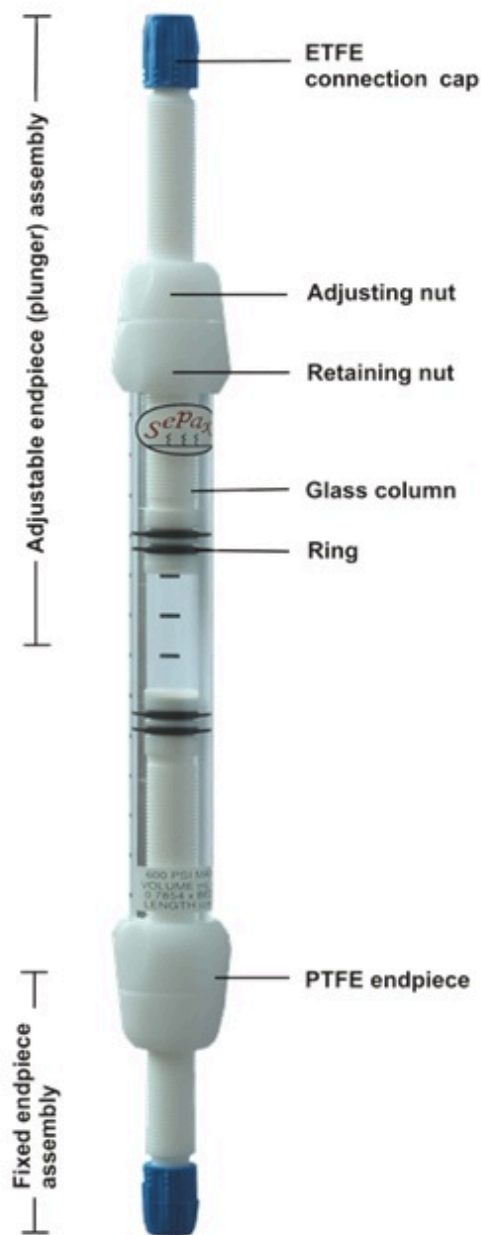
適用於大量的樣品前處理

產品特點：

1. 耐高壓高達900 psi (60 bar)。
2. 兩端可調整螺旋頭設計, 填充更緊密。
3. 多樣的規格滿足各種填充需求。
4. 溶劑相容性可與大多數用於FPLC純化的溶劑兼容。

產品規格：

Operating Parameters:	
Operating temperature:	4-30°C
pH stability:	1-14
Chemical stability:	Resistant to aqueous solutions and most solvents used in liquid chromatography. Not resistant to acetone, ketones, chlorinated hydrocarbons, aliphatic esters, phenol, >10% NaOH, > 10% HCl, > 5% acetic acid, or strong mineral acid.
Materials:	
Glass column	Borosilicate glass
Endpiece	PTFE
Frit (bed support)	PE
O-Ring	FKM/FPM
Adjusting nut and retaining cap	Acetal
Connection cap and fitting nuts	Glass-filled polypropylene
Operating pressure:	
ID-6.6mm	900 psi (60 bar)
ID-10mm	600 psi (40 bar)
ID-15mm	300 psi (20 bar)
ID-25mm	150 psi (10 bar)
ID-35mm	150 psi (10 bar)
ID-50mm	100 psi (6.7 bar)



3 configurations to choose from

AF: One fixed endpiece and one adjustable endpiece

AA: Two adjustable endpieces

FF: Non-adjustable with two fixed endpieces